

Product data sheet

OndoSense apex D700

Radar distance sensor for harsh environments



ONDOSENSE
apex

Technical data

General data	
Radar frequency (FMCW)	122 - 123 GHz , 119 - 125 GHz (selectable)
Radiation power	EIRP < 100 mW
MTTF	> 105 years
Opening angle	± 1.5° (3°)
Measurement range	0.10 - 6.00 m*
Measurement rate	500 Hz
Linearity	< ± 300 µm*
Repeatability	± 100 µm*

*for calibrated range up to 1.4m

Mechanical data	
Dimensions (W x H x D)	120 mm x 100 mm x 87 mm
Housing material	Aluminum
Lens material	PTFE
Connection	M12, 4-pin d-coded female connector M12, 8-pin, a-coded male connector
Weight	740 g

Environmental data	
Protection class	IP67
Operating temperature	-40 ...+ 70 °C
Storage temperature	-40 ...+ 85 °C
EMC	EN 301 489-1 v2.2.3, EN 301 489-03 v2.3.2

Product data sheet

OndoSense apex D700



Electrical data

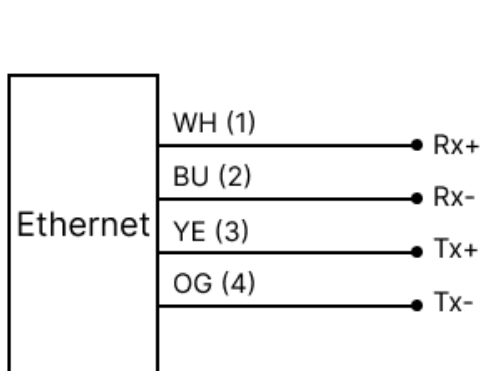
Power supply	24.0 V DC (9 - 36 V)
Operation current	125 mA
Power dissipation	3 W
Reverse voltage protection	yes
Switching outputs	-
Analog output	-

Profinet Data

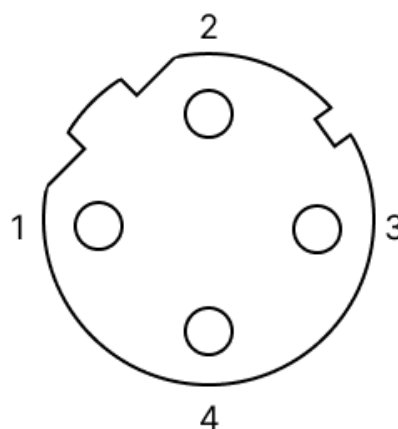
Communication interface	Profinet RT
Cycle time	1 ms
Data transfer	100 MBit/s
Line length	100 m
Classifications	<ul style="list-style-type: none">• RT Class 1• Conformance Class B• Netload Class III
Adjustable parameters	<ul style="list-style-type: none">• IP address• Device name• I&M 0...3 Parameter
Profinet characteristics	<ul style="list-style-type: none">• I&M 0...3• MRP• LLDP• PDEV• SNMP
Process data	<ul style="list-style-type: none">• Distance• Peak• Ramp Count

Connection

M12 4-pin d-coded female Profinet connector: The pins Tx+ and Tx- are used for transmitting data, while Rx+ and Rx- are used for receiving data.

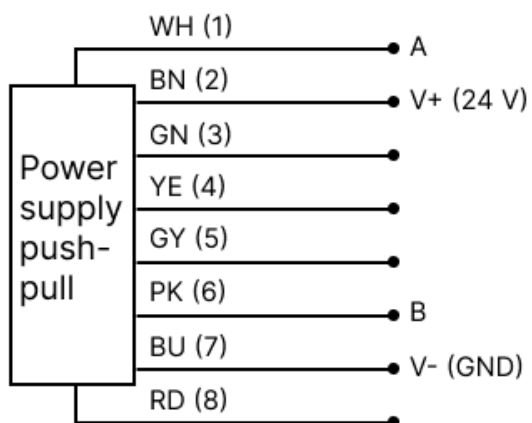


Pinout diagram sensor

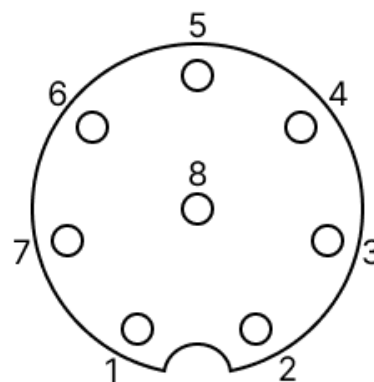


M12 4-pin d-coded female layout

M12 8-pin a-coded male connector: V+ (24 V) and V- (GND) are used for the power supply. The pins A and B are used for RS485 connection to the ConfigBox. The sensor can be connected with an 8-pin a-coded M12 cable.



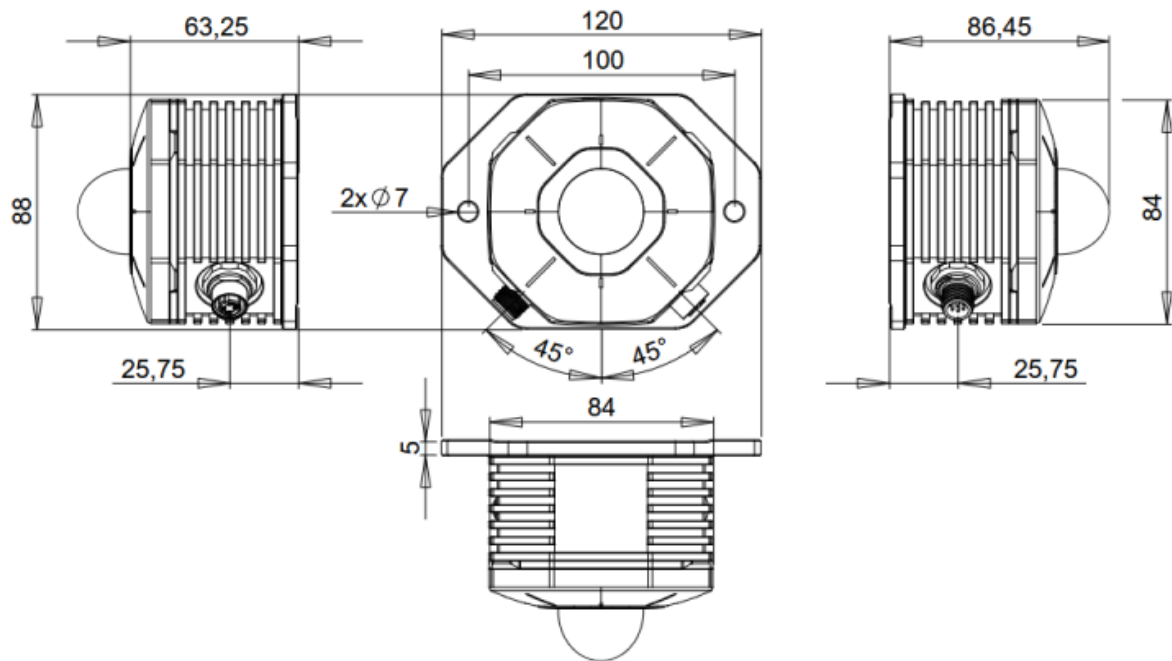
Pinout diagram sensor



M12 8-pin a-coded male layout

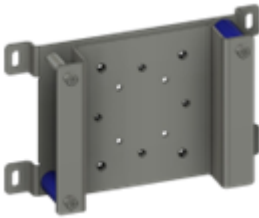
Dimensional drawings

The lens geometry has been abstracted. All offered lenses will fit within the envelope.





Accessories:

			Name	Description	Ordering
Install					
			OndoSense AngleControl	Precise alignment of OndoSense apex	MB.X200.1000