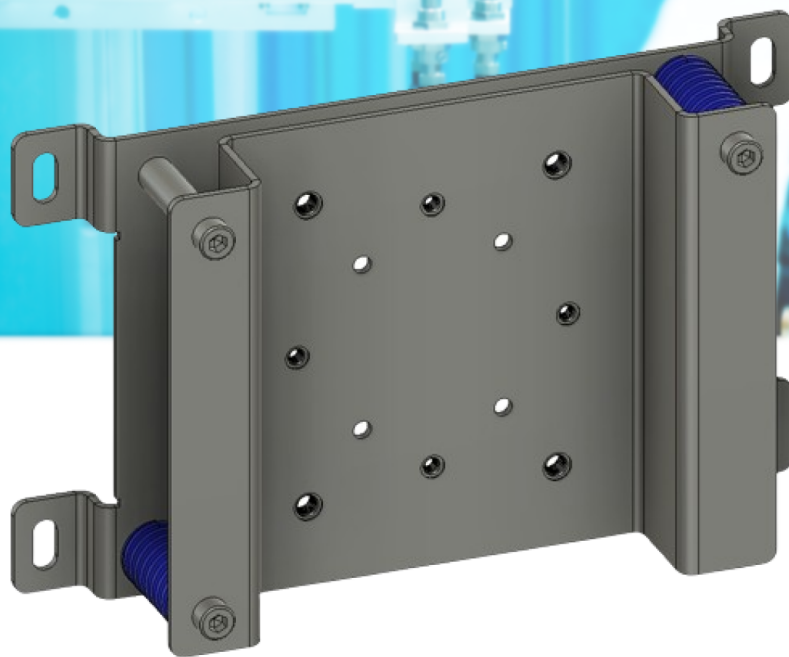


# Product data sheet

## OndoSense AngleControl

Precision alignment tool for OndoSense *apex*






**ONDOSENSE**  
***apex***

## Mechanical Data

Mechanical data	
Dimensions (W x H x D)	288x175x78 mm <sup>3</sup>
Weight	2,0 kg
Housing Material	1.4301/1.4307 (304/304L)
Horizontal Angle Range	± 2,5° (0,4° per turn)
Max. Numbers of Turns	± 7 turns
Vertical Angle Range	± 3,5° (0,5° per turn)
Fastening	4x M8
Part No.	MB.X200.1000

## Compatible products

Compatible products	apex	AirChill	apex Profinet
			
Product Temperature	-	up to 1600°C	-
HeatWindow Temperature	-	up to 1000°C	-
Environmental Temperature	-40°C / +70°C	-40°C / +120°C	-40°C / +70°C
Part No.	DS1.12344.1112.1	PS.2110.1000	AD300.06E11.12M1.1000

## Notes on Use

### Alignment process

The OndoSense apex AngleControl high precision alignment tool is useful for a correct orientation of the sensor perpendicular to the intended target. A precise perpendicular alignment is crucial for achieving high accuracy and a good signal strength. Check the received signal strength in the configuration software of the sensor as explained in the OndoSense apex documentation.

### Safety

The Angle Control is supplied in the neutral position. Please note that the adjustment range is seven turns in both directions. To find the neutral position, please measure the distance from the sensor mount to the back plate.

## Dimensional Drawings - Angle Control

Dimensions in mm

