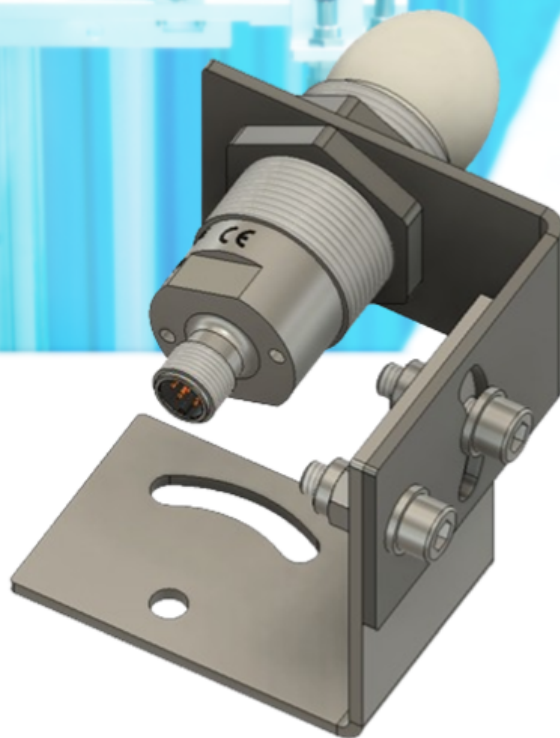


# Product data sheet

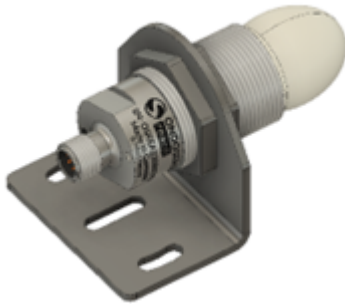
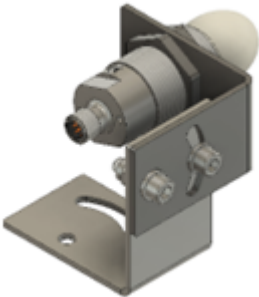
## OndoSense Mounting Brackets

Accessories for OndoSense *reach*



**ONDOSENSE**  
*reach*

### M30 - Mounting Brackets

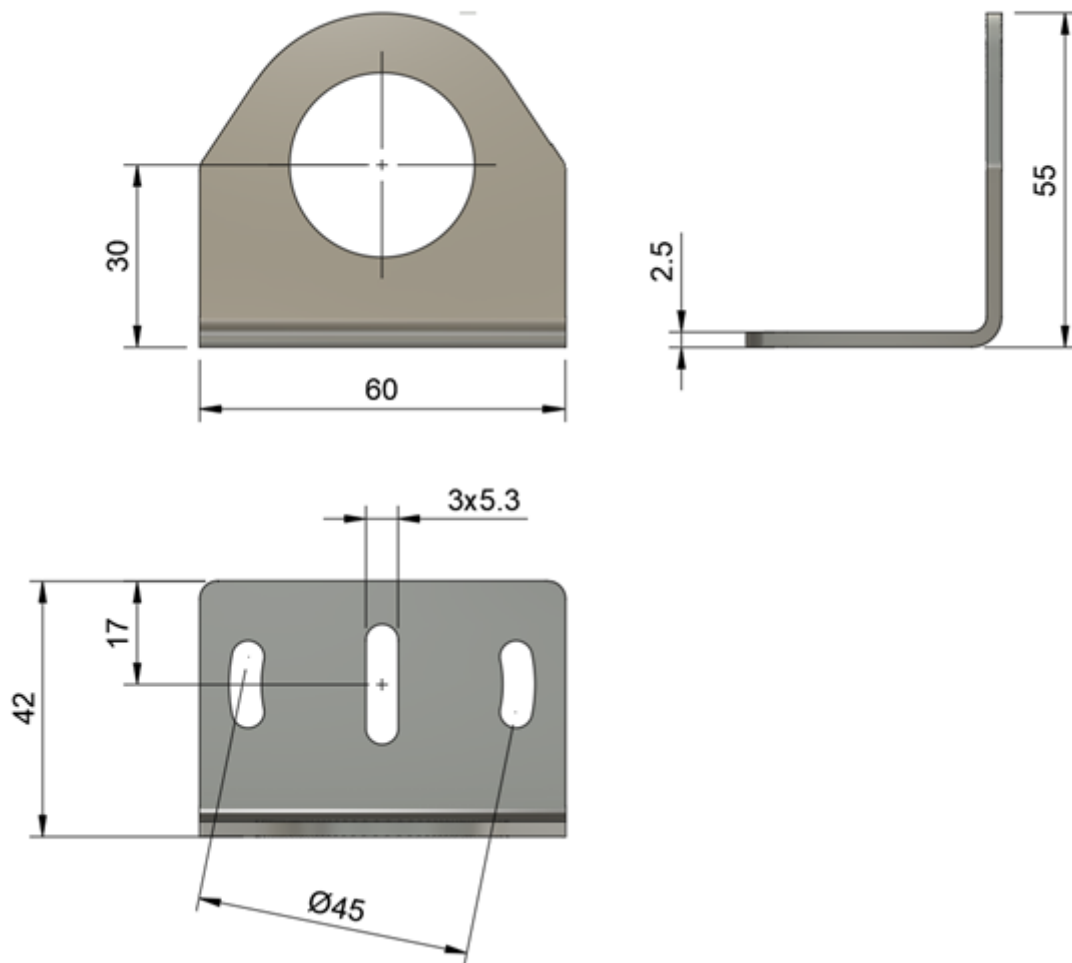
| Bracket              | M30 MountingBracket   | M30 SwivelBracket   |
|----------------------|---|---|
|                      |  |  |
| Size [mm x mm x mm]  | 60 x 55 x 42  | 70 x 65 x 65  |
| Material             | Galvanized steel  | 1.4301  |
| Weight               | 81g   | 223g  |
| degrees of freedom   | 1   | 2   |
| Horizontal range [°] | ± 15°   | ± 30°   |
| Vertical range [°]   | -   | ± 30°   |
| Part No.             | MB.R100.1000  | MB.R200.1000  |

### Notes on use

The OndoSense M30 mounting brackets are useful for simple mounting and correct alignment of the OndoSense reach sensors towards the target. Please note that the alignment according to the signal strength has a considerable influence on the accuracy and reliability of the measurement. Please refer to the reach manual for the alignment process.

For weak signal intensities from the target, we recommend our Corner Cube reflectors.

### M30 - Mounting Bracket



### M30 - Swivel Bracket

