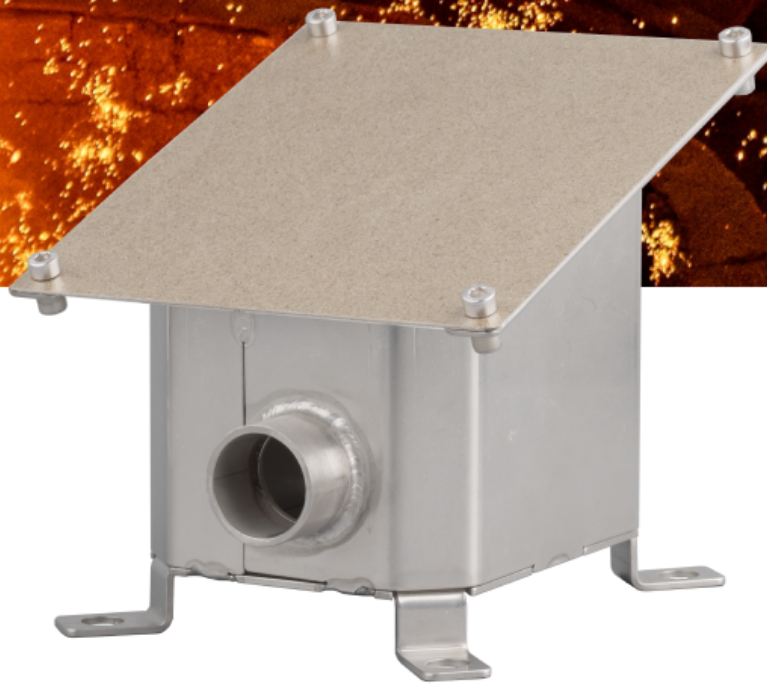


Product data sheet

OndoSense AirChill

Accessories for OndoSense *apex* (RS485 version)



ONDOSENSE
apex

Mechanical data	
Dimensions (W x H x D)	130 mm x 146 mm x 134 mm
Weight	0.9 kg
Housing material	1.4301/1.4307 (304/304L)
Compressed air connection	8 mm Hose
Cable cover connection	Flange with Ø30 mm OD
Fastening	4x M8
Part No.	PS.2100.1000

Air cooling specifications	
Max. temperature of target	Up to 1600 °C
HeatWindow temperature	Up to 1000 °C
Environment temperature	-40 °C .. +120 °C
Max. air flow pressure	7 bar
Air quality	ISO 8573-1:2010 [7:7:4]
Compressed air temperature	40 °C

HeatWindow

Level	HeatWindow 1000
Radiant heat (Short-term)	1000 °C
Radiant heat (Long-term)	700 °C
Shield material	Mica
Part No. for Replacement Orders	HW.1000.1000

Notes on Use

The AirChill Housing is a protective housing with an active cooling system for sensors of the Apex Profinet family. It enables sensor operation at high ambient temperatures.

Temperature range

The AirChill is intended for applications in which the sensor is exposed to strong irradiation heat, such as from molten or glowing metal up to surface temperatures of 1600 °C.

The HeatWindow can withstand short-term temperatures up to 1000 °C.

The environment temperature at the location of the AirChill can be up to 120 °C.

Maintenance

Clean the lens of the sensor as well as the HeatWindow in regular intervals in case of strong accumulation of dirt on the sensor lens.

The HeatWindow is a replaceable part that can be ordered from OndoSense.

Dimensional Drawing

Dimensions in mm

